

beauty
makes
HISTORY

FORMULATION GUIDE 2025





beauty makes HISTORY

STEP INTO THE PAST, IMAGINE THE FUTURE OF BEAUTY

ANTIQUE RITUALS

Travel back to the origins of beauty with natural emollients, nourishing butters, exotic oils, waxes and root extracts. Discover how ancient formulations inspire modern textures, offering both performance and sensory indulgence.

APOTHECARY LEGACY

From hand-picked botanicals to lab-purified plant actives, sourcing has evolved, but nature remains at the heart of beauty. Discover how modern formulations harness ethically sourced, high-performance extracts, blending tradition with sustainability.

BAROQUE BEAUTY

Rediscover the art of powders and perfumes, once essential to Renaissance elegance. From finely milled beauty powders to rich, lingering fragrances, explore how these historical rituals continue to shape modern cosmetics.

CHEMIST ERA

Discover how early discoveries in polymer science paved the way for today's lightweight, adaptable, and multi-functional ingredients, redefining textures, hold, and sensorial experiences in beauty.

BIOLOGY UNVEILED

From botanical remedies to DNA-driven skincare, biology is reshaping beauty like never before. Discover how genomics, microbiome research, and neurosciences are unlocking personalized, targeted solutions, bringing science and skincare closer than ever.

FUTURE STARTS TODAY

From pollution defense to climate-adaptive formulations, discover how innovation is creating resilient, protective, and sustainable solutions to meet the challenges of tomorrow.

beauty
makes
HISTORY

ANTIQUE RITUALS
FORMULATIONS



LUSTRE RELIC

HIGHLIGHTER JELLY STICK

008(2).R2

FACE

GP2025NYSCC



OVERVIEW

This innovative jelly highlighter stick utilizes three natural texturizers SAFIC' Care T CI, SAFIC' Care T CK 2, and SAFIC' Care T XCG to provide a fun jelly format delivering bronzed glow to the skin. Supporting the water-based system is a natural pentylene glycol, Sensicare® M 5500 as well as a natural preservation system, Sensicare® NAT 2. Once applied, its intensity can be blended and adjusted for a few seconds before setting completely and effectively.

Phase	Trade Name	Supplier	European I.N.C.I. Name	Function	%
A	Demineralized water	/	Aqua	/	69,50
B	Glycerin		Glycerin	Humectant	5,00
	SAFIC' Care T CI	SAFIC-ALCAN	Chondrus Crispus Powder	Thickener	1,00
	SAFIC' Care T CK 2		Chondrus Crispus Powder	Gelling agent	1,00
	SAFIC' Care T XCG		Ceratonia Siliqua Gum, Xanthan Gum, Glucose		0,50
C	Sensicare® M 5500	CHEMIPOL	Pentylene Glycol	Solubilizer	1,00
	Sensicare® NAT 2		Triethyl Citrate, Phenyl Propanol	Preservative	2,00
D	Sumicos™ Flash Rising Sun (HG757)	SUDARSHAN	Mica, CI 77891, CI 77491	Effect pigment	10,00
	Prestige® Bright Copper (35171)		Mica, Iron Oxide		5,00
	Prestige® Soft Copper (35340)		Mica, Iron Oxide		5,00

SAFIC' Care is a trademark of SAFIC-ALCAN

PROCESS

PHASE A : Heat up to 75°C and place under stirring.

PHASE B : Pre-mix then add it to phase A and heat at 75°C for 15 minutes until homogeneous.

Let cool down to 70°C.

PHASE C : Pre-mix then add it to phase AB and stir until homogeneous.

PHASE D : Pre-mix then add it to phase ABC and stir until homogeneous.

Complement with water and adjust pH to 5,5-6,5.

Pour into stick packaging and place in the fridge for 15 minutes.

PROPERTIES

APPEARANCE : Bronze gold shiny jelly stick.

VISCOSITY : N/A.

pH : 5,5 - 6,5.

VEIL & VIRTUE

FIXATIVE BROW GEL

EASTMAN

by **EASTMAN**



OVERVIEW

This minimalistic brow gel fixative formulation utilizes Eastman AQ™ 48 Ultra Polymer for precise styling. It is easy to apply and ensures a smooth, tack-free finish with no flaking. Its fast-drying and transparent nature enhances its product performance.

Phase	Trade Name	Supplier	European I.N.C.I. Name	Function	%
A	Demineralized water	/	Aqua	/	81,00
	Eastman AQ™ 48 Ultra Polymer	EASTMAN	Polyester-5	Film former	7,00
B	Propanediol	/	Propanediol	Humectant	10,00
	Xanthan Gum		Xanthan Gum	Rheology modifier & suspensive agent	1,00
C	Phenoxyethanol		Phenoxyethanol	Preservative	1,00

INGREDIENTS HIGHLIGHT

Sensicare® M 7000 (CHEMIPOL) : Propanediol, a humectant known for its antibacterial activity, making it ideal for enhancing skin hydration and preservation.

SAFIC' Care T XG Clear P (SAFIC-ALCAN) : Xanthan Gum with outstanding transparency providing viscosity and suspension in cosmetic products.

Biopol® PE (CHEMIPOL) : Phenoxyethanol, known as a broad-spectrum preservative, suitable for both leave-on and rinse-off cosmetic products, and stable over a wide pH range.

PROCESS

PHASE A : Heat up to 50°C under stirring for 15 minutes until solubilized.

PHASE B : Add it to phase A and stir until homogeneous.

PHASE C : Add it to phase AB and stir until homogeneous.

PROPERTIES

APPEARANCE : Clear low viscosity transparent gel.

beauty
makes
HISTORY

APOTHECARY LEGACY
FORMULATIONS

SILKEN HERITAGE

HAIR CREAM CONDITIONER

004.J46



HAIR

GP2025NYSCC



OVERVIEW

This nourishing hair cream conditioner benefits from CosmeGreen™ PC50, a bio-based cationic conditioning agent, for smoothness and manageability. Enriched with JD Jojoba Butter V and JD Jojoba Organic Golden Oil to deeply hydrate and restore hair health. Natural colorants including SAFIC' Care A Blue Liquid add a botanical touch while Luteana™ Scalp, a microalgae based active, supports sensitive scalp and dry dandruff relief. Sensicare® C2095 ensures microbial protection, making this formula both effective and sustainable for healthy, vibrant hair.

Phase	Trade Name	Supplier	European I.N.C.I. Name	Function	%
A	Demineralized water	/	Aqua	/	59,50
	Glycerin		Glycerin	Humectant	3,00
B	Protachem™ CS-50	PROTAMEEN	Cetearyl Alcohol	Consistency agent & co-emulsifier	10,00
	SAFIC' Care E CE MB	SAFIC-ALCAN	Cetyl Esters	Consistency agent	4,00
	CosmeGreen™ PC50	SURFACTGREEN	Stearyl/Behenyl Betainate Esylate, Stearyl/Behenyl Alcohol	Conditioning & consistency agent	4,00
	JD Jojoba Butter V	JOJOBA DESERT	Simmondsia Chinensis Seed Oil, Stearyl Stearate, Rhus Verniciflua Peel Wax, Copernicia Cerifera Wax, Hydrogenated Vegetable Oil	Consistency agent	3,00
	Cosm'Oil® KD-H	COSMACT	Pongamia Glabra Seed Oil, Ethyl Ferulate, Stearyl Glycyrhretinate	Emollient	3,00
	JD Jojoba Organic Golden Oil	JOJOBA DESERT	Simmondsia Chinensis Seed Oil		2,00
	Mirabelle Plum Seed Oil	BIOLIE by SENSIENT	Prunus Domestica Seed Oil		2,00
C	Garnet Red		Helianthus Annuus Seed Oil, Alkanna Tinctoria Root Extract	Natural color	2,00
	Luteana™ Scalp	MICROPHYT	Caprylic/Capric Triglyceride, Plankton Extract, Tocopherol	Active	0,50
	Sensicare® C2095	CHEMIPOL	Triethyl Citrate, Caprylyl Glycol, Levulinic Acid, Sodium Levulinate	Preservative	2,00
	Plantasens® Vitamin E Natural 50	CLARIANT	Tocopherol, Helianthus Annus Seed Oil	Anti-oxidant	0,40
	Peony Blush 812820	SYMRISE	Parfum	Fragrance	0,30
D	CosmeGreen™ Buffer solution	SURFACTGREEN	Aqua, Sodium Lactate, Lactic Acid	pH adjuster	4,00
E	SAFIC' Care A Blue Liquid	SAFIC-ALCAN	Genipa Americana Fruit Extract, Glycerin	Active	0,30

SAFIC' Care is a trademark of SAFIC-ALCAN

SILKEN HERITAGE

HAIR CREAM CONDITIONER

004.J46



HAIR

GP2025NYSCC



OVERVIEW

This nourishing hair cream conditioner benefits from CosmeGreen™ PC50, a bio-based cationic conditioning agent, for smoothness and manageability. Enriched with JD Jojoba Butter V and JD Jojoba Organic Golden Oil to deeply hydrate and restore hair health. Natural colorants including SAFIC' Care A Blue Liquid add a botanical touch while Luteana™ Scalp, a microalgae based active, supports sensitive scalp and dry dandruff relief. Sensicare® C2095 ensures microbial protection, making this formula both effective and sustainable for healthy, vibrant hair.

PROCESS



PHASE A : Heat up to 85°C under stirring.

PHASE B : Heat up to 85°C under stirring until homogeneous then add it to phase A and stir until homogenous.

Let cool down to 40°C under stirring.

PHASE C : Pre-mix then add it to phase AB and homogenize.

PHASE D : Add it to phase ABC to adjust pH near 4,0.

PHASE E : Add it to phase ABCD and homogenize.

Let cool down to 25°C under stirring.

Complement with water and homogenize.

PROPERTIES



APPEARANCE : Deep purple airy cream.

VISCOSITY : 136000 cPs
(Brookfield RVDV-I+, 5 rpm,
1 min, spindle 6).

pH : 4,0.



beauty
makes
HISTORY

BAROQUE BEAUTY
FORMULATIONS

MOONLIT AURA

GLITTERY PERFUME

011.Y1



BODY

GP2025NYSCC



OVERVIEW

This glittery perfume is made thanks to Rheostyl™ UP, which can effectively suspend effect pigments in hydro-alcoholic formulations, for a pleasant experience and long-lasting effect on your skin. The fragrance longevity is improved due to Eastman's fragrance fixative Eastman Sustane™ CG 200.

Phase	Trade Name	Supplier	European I.N.C.I. Name	Function	%
A	Demineralized water	/	Aqua	/	10,00
	Rheostyl™ UP	ARKEMA	Acrylates Copolymer	Thickener & suspensive agent	5,00
B	Triethanolamine	/	Triethanolamine	pH adjuster	0,75
C	Ethanol 96°		Alcohol	Additive	72,10
	Eastman Sustane™ CG 200	EASTMAN	Sucrose Acetate Isobutyrate, Ethanol	Fragrance fixative	2,00
	Sumicos™ Arctic Flare (SM162)	SUDARSHAN	Synthetic Fluorphlogopite, CI 77891	Effect Pigment	0,15
	Skin Memory 448592	SYMRISE	Parfum	Fragrance	10,00



PROCESS

PHASE A : Place under stirring.

PHASE B : Add it to phase A to neutralize and get a clear gel.

PHASE C : Add to phase AB in sequence and mix until homogeneous between each addition.



PROPERTIES

APPEARANCE : Clear perfume with suspended glitters.

VISCOSITY : N/C.

pH : N/A.



beauty
makes
HISTORY

CHEMIST ERA
FORMULATIONS

CATALYST KISS

TINTED LIP BALM

036.C13



ISO 16128

LIPS

GP2025NYSCC



OVERVIEW

This high performing tinted lip balm is packed with natural waxes, butters, and oils. Carnauba Wax TS-1, Candelilla Wax DR-3, CosmeGreen™ PCMB, and JD Jojoba Butter V build out the structure of this balm. Flora Grease SSJ and Eastman Sustane™ SAIB MCT Food Grade contribute to the film forming benefit. Camellia Oil and Texiterra™ Raspberry Seed Oil aid in the moisturization to your lips. Lastly and certainly not least, Color Grease BIO and Color Grease R7CA give a vibrant rich plum color to your lips.

hase	Trade Name	Supplier	European I.N.C.I. Name	Function	%
A	CosmeGreen™ PCMB	SURFACTGREEN	Cetearyl Betainate Mesylate, Cetearyl Alcohol	Conditioning & consistency agent	7,00
	JD Jojoba Butter V	JOJOBA DESERT	Simmondsia Chinensis Seed Oil, Stearyl Stearate, Rhus Verniciflua Peel Wax, Copernicia Cerifera Wax, Hydrogenated Vegetable Oil	Consistency agent	5,00
	Carnauba Wax TS-1	INA TRADING	Copernicia Cerifera Wax		10,00
	Candelilla Wax DR-3		Euphorbia Cerifera Wax		5,00
	Flora Grease SSJ		Euphorbia Cerifera Wax Extract, Simmondsia Chinensis Seed Oil, Squalane	Gloss enhancing emollient	25,00
	Eastman Sustane™ SAIB MCT Food Grade	EASTMAN	Sucrose Acetate Isobutyrate, Caprylic/Capric Triglyceride	Transfer resistant agent	10,00
	Texiterra™ Raspberry Seed Oil	SCOTT BADER	Rubus Idaeus Seed Oil	Emollient	15,00
	Camellia Oil	INA TRADING	Camellia Oleifera Seed Oil		9,35
B	Color Grease R7CA		CI 15850, Euphorbia Cerifera Cera Extract, Squalane	Pigment dispersion	8,00
	Color Grease BIO		CI 77499, Euphorbia Cerifera Cera Extract, Squalane		4,00
C	Plantasens® Vitamin E Natural 50	CLARIANT	Tocopherol, Helianthus Annus Seed Oil	Anti-oxidant	0,25
	Cherry Malachite 812523	SYMRISE	Parfum	Fragrance	0,40
					1,00

CATALYST KISS

TINTED LIP BALM

036.C13



ISO 16128

LIPS

GP2025NYSCC



OVERVIEW

This high performing tinted lip balm is packed with natural waxes, butters, and oils. Carnauba Wax TS-1, Candelilla Wax DR-3, CosmeGreen™ PCMB, and JD Jojoba Butter V build out the structure of this balm. Flora Grease SSJ and Eastman Sustane™ SAIB MCT Food Grade contribute to the film forming benefit. Camellia Oil and Texiterra™ Raspberry Seed Oil aid in the moisturization to your lips. Lastly and certainly not least, Color Grease BIO and Color Grease R7CA give a vibrant rich plum color to your lips.



PROCESS

PHASE A : Place under stirring and heat up to 85°C.

PHASE B : Pre-mix then add it to phase A and stir for 1 minute at 800 rpm. Let cool down to 80°C under stirring.

PHASE C : Pre-mix then add it to phase AB and stir until homogenous. Let cool down to 75°C.

At 75°C pour the balm into containers and let cool down to room temperature.



PROPERTIES

APPEARANCE : Plum colored lipstick.

VISCOSITY : N/A.

pH : N/A.

SPHERICA SCRUB

EXFOLIATING SOLID GEL

020.129



BODY

GP2025NYSCC



OVERVIEW

This shower exfoliant powerhouse is a great addition to your self-care routine. Utilizing two natural texturizers SAFIC' Care T CK 1 Pure and SAFIC' Care T XG 80, a breakable gel is created. Adding the Amber Phytpeel 500 T allows for a great physical exfoliation and beautiful tint to the formulation. Lastly, Sensicare® M 5500 and Sensicare® C 3000 provide robust preservation for a lasting in-shower experience.

Phase	Trade Name	Supplier	European I.N.C.I. Name	Function	%
A	Demineralized water	/	Aqua	/	85,60
	Glycerin		Glycerin	Humectant	4,00
B	SAFIC' Care T CK 1 Pure	SAFIC-ALCAN	Chondrus Crispus Powder	Gelling agent	2,00
	SAFIC' Care T XG 80		Xanthan Gum	Suspensive agent	0,50
C	Sensicare® M 5500	CHEMIPOL	Pentylene Glycol	Solubilizer	2,00
	Sensicare® C 3000		Dehydroacetic Acid, Benzyl Alcohol	Preservative	0,60
	Frambuesa 637020	SYMRISE	Parfum	Fragrance	0,30
D	Amber PhytPeel 500 T	GREENPHYT	Amber Powder	Scrub	5,00

SAFIC' Care is a trademark of SAFIC-ALCAN

PROCESS



PHASE A : Heat up to 75°C and place under stirring.

PHASE B : Pre-mix then add it to phase A and heat up to 75°C for 15 minutes until homogeneous.

Stop heating then let cool down to 65°C.

PHASE C : Pre-mix then add it to phase AB and homogenize.

Adjust pH to 5,5-6,0.

PHASE D : Add it to phase ABC and homogenize.

Complement with water and homogenize.

Pour at 60°C in an appropriate mold and let cool down to room temperature.

PROPERTIES



APPEARANCE : Orange jelly.

VISCOSITY : N/A.

pH : 5,5 - 6,0.

beauty
makes
HISTORY



BIOLOGY UNVEILED
FORMULATIONS



VITAL QUENCH

MOISTURIZING LIGHT BODY CREAM

037.E7

BODY

GP2025NYSCC



OVERVIEW

This luxurious moisturizing body cream enhances skin elasticity and renewal with WKPep® SRM Peptides and WinPep® Decatide, while JD Phyto-Or 1%™ promotes an even complexion. Luteana™, a microalgae active, soothes and calms sensitive skin with anti-inflammatory benefits. Texique® HE10 ensures deep hydration and optimal water retention, creating a rich, nourishing texture. Sensicare® C 3300 provides broad-spectrum protection, leaving skin smooth, supple, and revitalized.

Phase	Trade Name	Supplier	European I.N.C.I. Name	Function	%
A	Demineralized water	/	Aqua	/	73,20
	Glycerin		Glycerin	Humectant	3,00
B	Texique® HE10	SCOTT BADER	Sodium Acrylate/Sodium Acryloyldimethyl Taurate Copolymer, C13-15 Alkane, Coco-Glucoside	Thickener & O/W emulsifier	4,00
	Texiterra™ Marula Oil		Sclerocarya Birrea Seed Oil	Emollient	6,00
C	Rhodonite Red	BIOLIE by SENSIENT	Helianthus Annuus Seed Oil, Capsicum Annum Fruit Extract	Natural color	1,00
	JD Phyto-Or 1%™	JOJOBA DESERT	Joboba Seed Oil, Blakeslea Trispora Mycelium Extract/C30-45 Olefin	Active	1,50
	Luteana™	MICROPHYT	Caprylic/Capric Triglyceride, Plankton Extract, Tocopherol		0,50
	Spiced Pumpkin Vanilla 415658	SYMRISE	Parfum	Fragrance	0,30
	Plantasens® Vitamin E Natural 50	CLARIANT	Tocopherol, Helianthus Annus Seed Oil	Anti-oxidant	0,40
D	Cumb'O	BIOLIE by SENSIENT	Cucumis Sativus Fruit Extract, Citric Acid, Sodium Benzoate, Potassium Sorbate	Additive	5,00
	Isocumis		Cucumis Sativus Fruit Extract, Propanediol	Active	2,00
	Sensicare® C 3300	CHEMIPOL	Benzyl Alcohol, Glyceryl Laurate	Preservative	1,10
	WKPep® SRM Peptides	WINKEY	Glycerin, Aqua, Polysorbate-20, Tripeptide-1, Hexapeptide-9, Palmitoyl Tripeptide-5, Palmitoyl Pentapeptide-4, Palmitoyl Tetrapeptide-7	Active	1,00
	WinPep® Decatide		Aqua, Glycerin, Pentylene Glycol, 1,2-Hexanediol, Carnosine, Oligopeptide-1, Acetyl Hexapeptide-8, Palmitoyl Pentapeptide-4, Hexapeptide-9, Acetyl Tetrapeptide-3, Acetyl Tetrapeptide-9, Acetyl Tetrapeptide-11, Nonapeptide-1, Palmitoyl Tripeptide-8		1,00

VITAL QUENCH

MOISTURIZING LIGHT BODY CREAM

037.E7



BODY

GP2025NYSCC



OVERVIEW

This luxurious moisturizing body cream enhances skin elasticity and renewal with WKPep® SRM Peptides and WinPep® Decatide, while JD Phyto-Or 1%™ promotes an even complexion. Luteana™, a microalgae active, soothes and calms sensitive skin with anti-inflammatory benefits. Texique® HE10 ensures deep hydration and optimal water retention, creating a rich, nourishing texture. Sensicare® C 3300 provides broad-spectrum protection, leaving skin smooth, supple, and revitalized.

PROCESS



PHASE A : Place under stirring and stir until homogeneous.

PHASE B : Add it to phase A under stirring for 10 minutes until homogeneous.

PHASE C : Pre-mix then add it to phase AB under strong stirring for 3 minutes.

PHASE D : Add one by one to phase ABC and stir until homogeneous. Check pH if around 6,5 - 6,8.

PROPERTIES



APPEARANCE : Light orange to yellow cream.

VISCOSITY : 69920 cPs
(Brookfield RVDV-I+, 5 rpm, 1 min, spindle 5).

pH : 6,5 - 6,8.



beauty
makes
HISTORY



FUTURE STARTS TODAY
FORMULATIONS



AETHER YOUTH

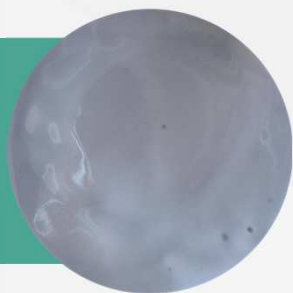
WELL-AGEING NATURAL FACE CREAM

030.E4



FACE

GP2025NYSCC



OVERVIEW

This natural well-ageing face cream deeply nourishes and revitalizes the skin. SeaBalance 2000 ensures hydration as a seaweed-based emulsifier, while JD Jojoba Colorless Oil and Textiterra™ Kalahari Melon Seed Oil promote softness and barrier protection. Eastman GEM™ Retinyl Linoleate supports wrinkle reduction and hyperpigmentation support, and Aloe Vera BioPhytWater soothes and refreshes. JD Jojoba Silk-Like Powder provides a velvety texture, complemented by SAFIC' Care A Blue Liquid for an elegant blue hue. PhycoSi™ recharges the skin with bioavailable marine silicon, while Sensicare® FP 4 meets your preservation needs.

Phase	Trade Name	Supplier	European I.N.C.I. Name	Function	%
A	Demineralized water	/	Aqua	/	72,22
B	SeaBalance 2000	CARBONWAVE	Sargassum Fluitans/Natans Extract, Xanthan Gum, Pentylene Glycol	Emulsifier and texturizer	3,00
C	SAFIC' Care T XG Clear P	SAFIC-ALCAN	Xanthan Gum	Suspensive agent	0,50
	Glycerin	/	Glycerin	Humectant	3,00
D	JD Jojoba Colorless Oil	JOJOBA DESERT	Simmondsia Chinensis Seed Oil	Emollient	5,00
	Textiterra™ Kalahari Melon Seed Oil	SCOTT BADER	Citrullus Lanatus Seed Oil		5,00
	Plantasens® Vitamin E Natural 50	CLARIANT	Tocopherol, Helianthus Annus Seed Oil	Anti-oxidant	0,40
	Eastman GEM™ Retinyl Linoleate	EASTMAN	Retinyl Linoleate	Active	0,10
E	Dextralip® 10C	PKC	Sodium Dextran Sulfate		0,20
	Aloe Vera BioPhytWater	GREENPHYT	Aloe Barbadensis Leaf Water, Sodium Benzoate, Citric Acid, Potassium Sorbate	Additive	5,00
F	JD Jojoba Silk-Like Powder	JOJOBA DESERT	Simmondsia Chinensis Seed Oil, Tapioca Starch	Sensory enhancer	2,00
	SAFIC' Care A Blue Liquid	SAFIC-ALCAN	Genipa Americana Fruit Extract, Glycerin	Active	0,08
	Sensicare® FP 4	CHEMIPOL	Triethyl Citrate, Caprylyl Glycol, Phenyl Propanol	Preservative	2,00
	PhycoSi™	MICROPHYT	Aqua, Phaeodactylum Tricornutum Extract, Pentylene Glycol	Active	1,50

SAFIC' Care is a trademark of SAFIC-ALCAN

AETHER YOUTH

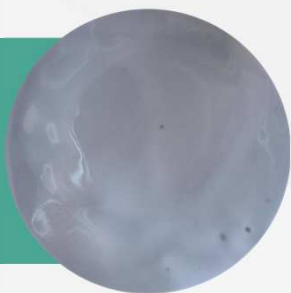
WELL-AGEING NATURAL FACE CREAM

030.E4



FACE

GP2025NYSCC



OVERVIEW

This natural well-ageing face cream deeply nourishes and revitalizes the skin. SeaBalance 2000 ensures hydration as a seaweed-based emulsifier, while JD Jojoba Colorless Oil and Texiterra™ Kalahari Melon Seed Oil promote softness and barrier protection. Eastman GEM™ Retinyl Linoleate supports wrinkle reduction and hyperpigmentation support, and Aloe Vera BioPhytWater soothes and refreshes. JD Jojoba Silk-Like Powder provides a velvety texture, complemented by SAFIC' Care A Blue Liquid for an elegant blue hue. PhycoSi™ recharges the skin with bioavailable marine silicon, while Sensicare® FP 4 meets your preservation needs.

PROCESS



PHASE A : Place under stirring (Silverson SL2T).

PHASE B : Add it to phase A under stirring at 5000 rpm until homogeneous.

PHASE C : Pre-mix then add it to phase AB and stir for 3 minutes until homogeneous.

PHASE D : Pre-mix then add it to phase ABC under stirring at 10000 rpm for 5 minutes until homogeneous.

PHASE E : Stir until dissolved then add it to phase ABCD and stir until homogeneous.

PHASE F : Add it one by one to phase ABCDE and homogenize.
Adjust pH to 5,0 - 6,5.

PROPERTIES



APPEARANCE : Light blue cream.

VISCOSITY : 13320 cPs
(Brookfield RVDV-I+, 5 rpm, 1 min, spindle 4).

pH : 5,0 - 6,5.

BIOFUSION PEEL

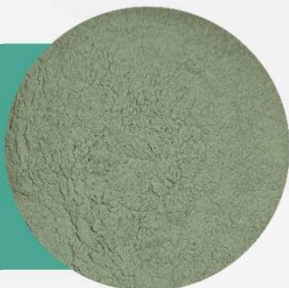
POWDER TO PEEL-OFF MASK

013.W3



FACE

GP2025NYSCC



OVERVIEW

This powder-to-peel-off mask combines powerful ingredients for a refreshing skin treatment. SAFIC' Care M POP7 creates a hydrating, elastic layer that helps with active delivery. Bamboo PhytMic T absorbs excess oils while Spirulina PhytMic 50 T and SAFIC' Care A Blue Powder provides to the formulation a beautiful color transformation from green to blue and infuses the skin with nutrients. WKPep® Copper Peptide helps with skin renewal and collagen support. The result? A revitalized, smooth complexion with a fresh, healthy glow.

Phase	Trade Name	Supplier	European I.N.C.I. Name	Function	%
A	SAFIC' Care M POP7	SAFIC-ALCAN	Solum Diatomeae, Algin, Calcium Sulfate, Tetrasodium Pyrophosphate, Magnesium Oxide	Peel-off agent	90,50
	SAFIC' Care A Blue Powder		Genipa Americana Fruit Extract, Corn Starch Modified	Active	2,00
	Bamboo PhytMic T	GREENPHYT	Bambusa Arundinacea Stem Powder	Sensory enhancer	5,00
	Spirulina PhytMic 50 T		Spirulina Maxima Powder	Natural color	2,00
	Peony Blush 812820	SYMRISE	Parfum	Fragrance	0,30
	WKPep® Copper Peptide	WINKEY	Copper Tripeptide-1	Active	0,20

SAFIC' Care is a trademark of SAFIC-ALCAN

PROCESS

PHASE A : Mix until homogeneous.



PROPERTIES

APPEARANCE : Green powder to blue peel-off mask.

VISCOSITY : N/A.

pH : N/A.



BUILD A BETTER FUTURE TOGETHER



We are committed to being your key partner in shaping the future of cosmetics through our highly selective sourcing of partners who can provide both effective and sustainable ingredient innovations.

We believe in harnessing the power of Nature and Synthesis to create sustainable beauty products that are safe for environment and consumers.

Our mission is to provide you with the most extensive range of the highest quality ingredients to unleash your creativity.



WATER PRESERVATION
AND BLUE BEAUTY



UPCYCLING & WASTE
MANAGEMENT



SCIENCE AS KEY
SUSTAINABLE DRIVER



PLANET &
PEOPLE

MORE INGREDIENTS

ONLINE CATALOGUE



A large white rounded rectangle with rounded corners, intended for taking notes. It occupies the majority of the page below the header.

Follow us on LinkedIn



www.safic-alcan.com